

Puncknowle Manor Estate

Puncknowle - Dorchester - Dorset - DT2 9BX - Phone:01308 897 706 - Email:office@pmestate.com

[Home](#) [Holiday Accommodation](#) [Shoot](#) [Photographs](#) [Contact us](#)

Shoot



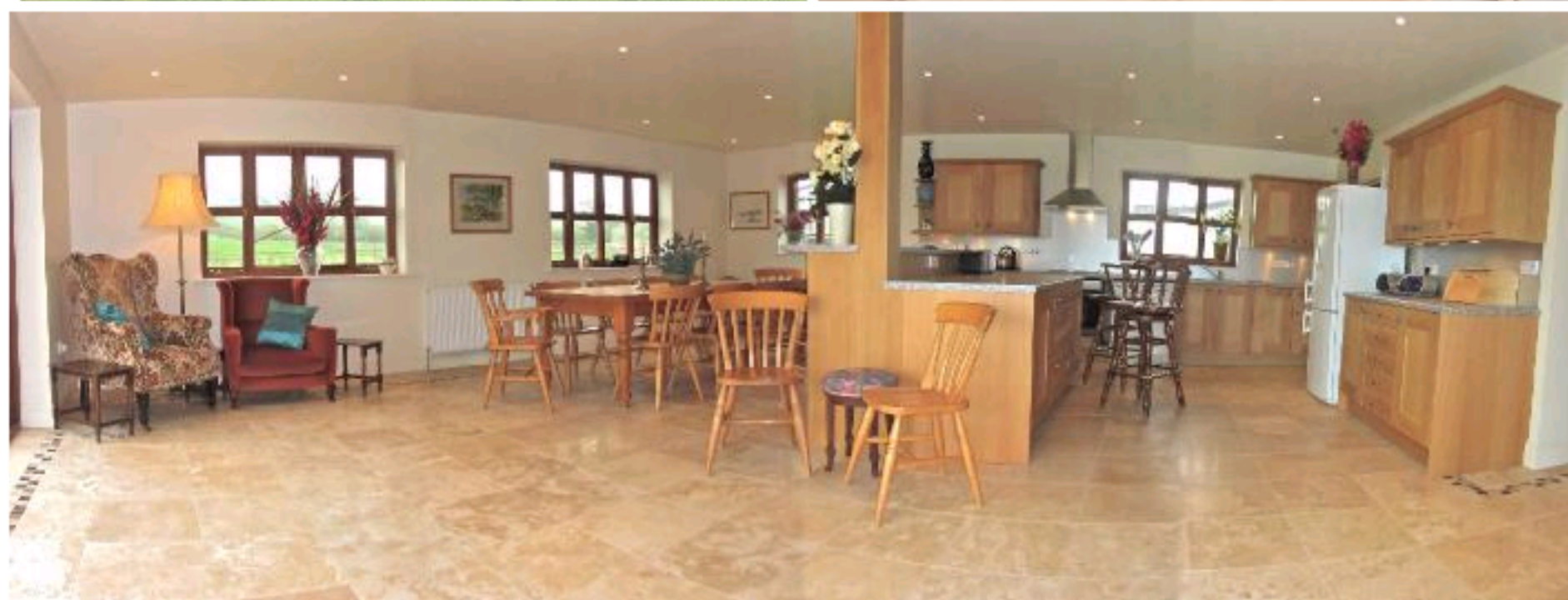
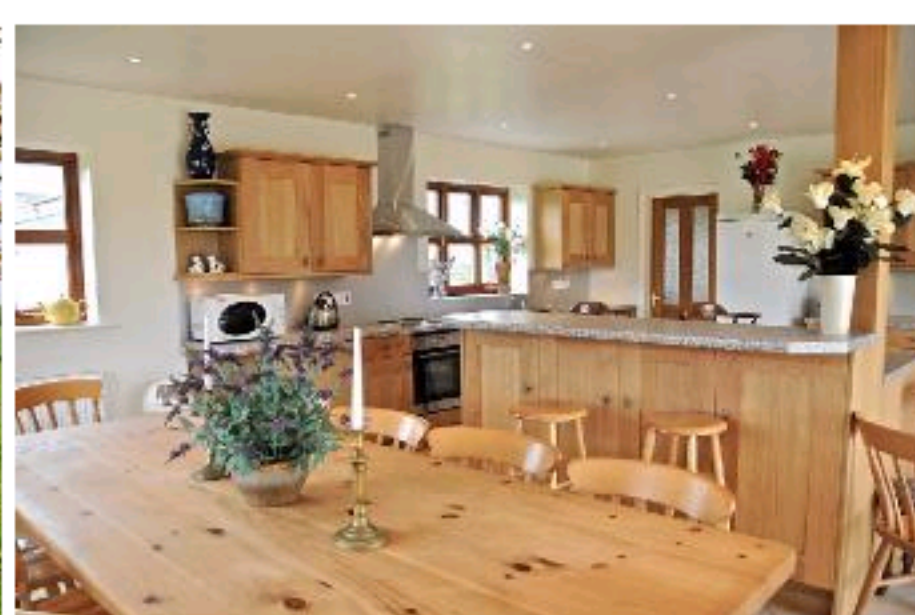
The estate runs a challenging and diverse shoot, which is expertly managed by Martin Baker-Simms, the estate gamekeeper. This highly regarded shoot comprises driven pheasant and partridge, with bags often containing snipe, woodcock and pigeon. Rough shoot days are also available for these birds, as well as for duck and teal. Teams of guns ride in our purpose built, comfortable, and well-stocked guns-wagon.

The shoot dinners (included in the cost for the day) are catered by one of the top chefs in the southwest, served with carefully chosen wines. New this year is a recently renovated, large farmhouse located on 4-Meads Farm. 4-Meads Farmhouse is for your exclusive use for shoot lunches or dinners and overnight accommodation. 4-Meads Farmhouse consists of 8 bedrooms, 5 bathrooms, a grand lounge, and a very spacious eat in kitchen.

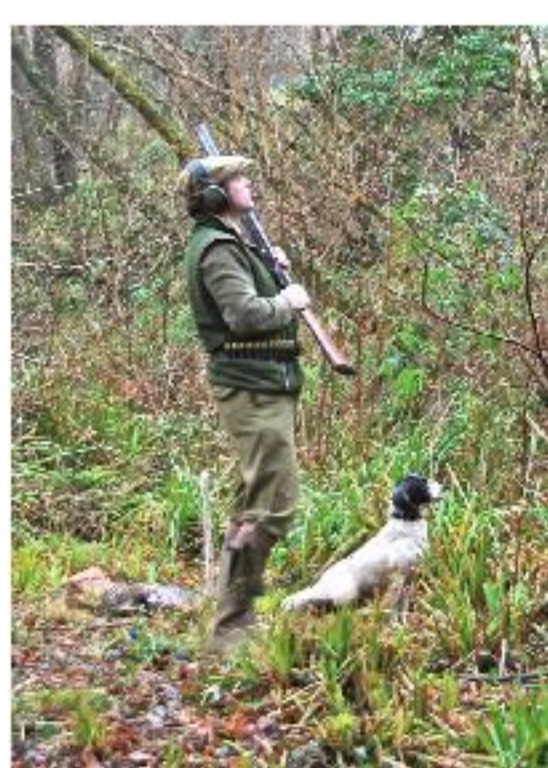
Contact

Puncknowle Manor Estate, Puncknowle, Dorchester, Dorset, DT2 9BX

Office Telephone:01308 897 706 • Office Facsimile:01308 898 022 • Email: office@pmestate.com
After Office Hours: 07717 290 096



Shooting lodge - Four Meads Farmhouse



[back to top](#)